



Apache Leap Special Management Area

The Tonto National Forest (TNF) is preparing a management plan for the Apache Leap Special Management Area (SMA) as directed by the Carl Levin and Howard P. “Buck” McKeon National Defense Authorization Act (NDAA) for Fiscal Year 2015. The NDAA directs that the management plan be prepared in consultation with affected tribes, the Town of Superior in Pinal County, Arizona, Resolution Copper and interested members of the public. The NDAA also directs the exchange of the 110-acre Apache Leap Parcel, presently owned by Resolution Copper, to the TNF. This parcel will be added to an existing 697-acre area of TNF to form the 807-acre area Apache Leap SMA (see map). This area will be managed in accordance with the NDAA.

During plan preparation the TNF must consider whether additional measures are necessary to protect the cultural, archaeological, or historical resources of Apache Leap, and consider whether to provide access for recreation. The management plan will be written to satisfy the purposes set forth in the NDAA: “to preserve the natural character of Apache Leap; to allow for traditional use by Native American people; and to protect and conserve cultural and archaeological resources of the area.”

The Apache Leap SMA management plan will establish desired conditions, management objectives, and standards for the approximately 807-acre area in accordance with the NDAA and Forest Service planning requirements.

Tonight’s workshop is intended to **INFORM** the public about the:
Special Land Management Designation
Planning process
Forest’s Decision-Space

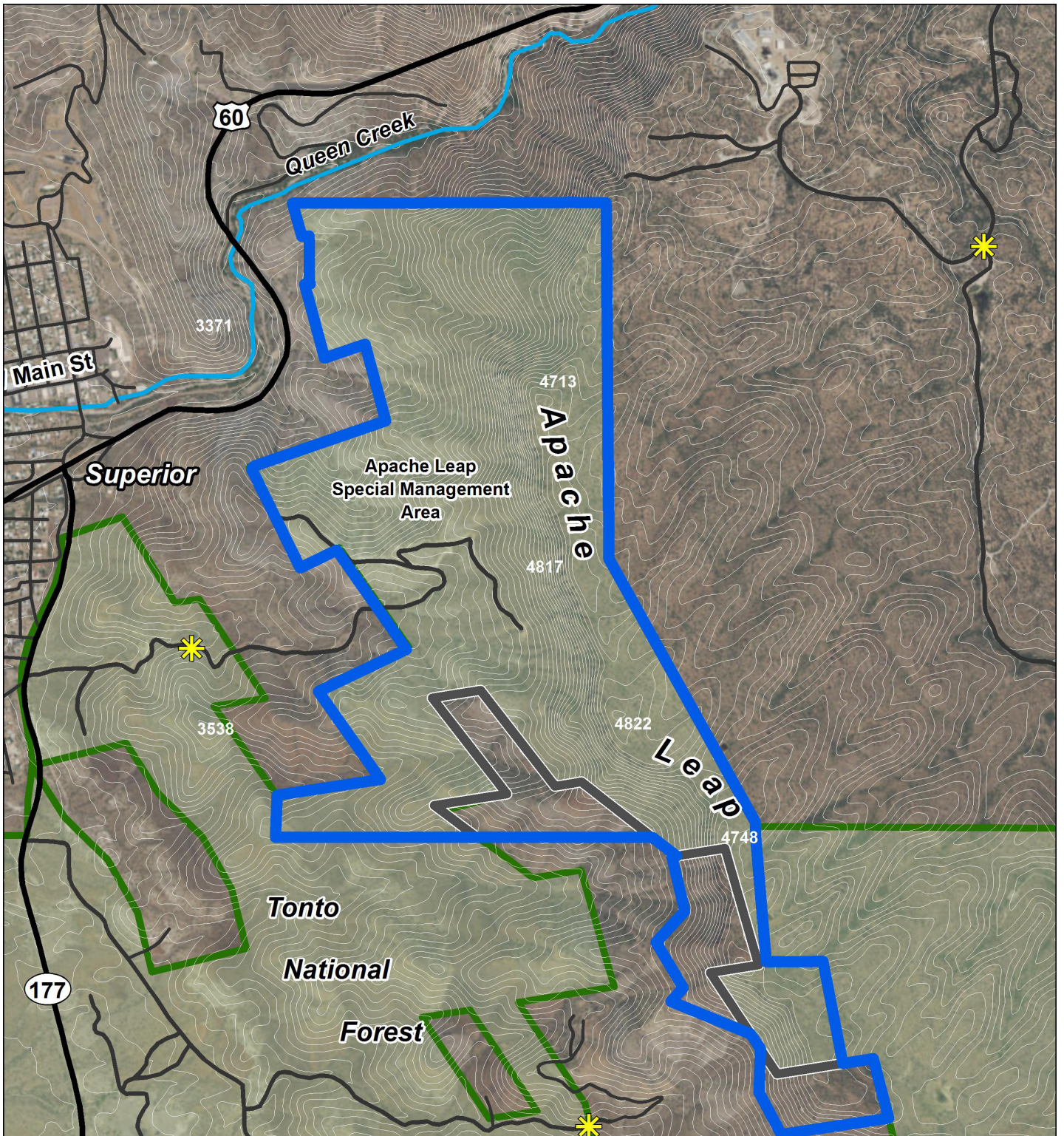
And to **LEARN** from the public their:
Current use of Apache Leap
Issues or Concerns Regarding the Apache Leap Area,
Ideas for Achieving Optimal Future Management of Apache Leap.

FOR MORE INFORMATION ON THE PROJECT



Visit the project website at www.ApacheLeapSMA.us or contact Mary Rasmussen, Project Manager, at (602) 225-5246 or mcrasmussen@fs.fed.us.

Planning Process and Schedule

September - December 2016	Forest Service to meet with representatives of the Town of Superior, Resolution Copper, affected Tribes, interested members of the public, and interested stakeholder groups for input on the Management Plan content
January - March 2017	Prepare Management Plan
March - April 2017	Public comment period for Management Plan Public Meeting in Superior, Arizona
March - June 2017	Prepare Environmental Assessment for Management Plan
July - November 2017	Environmental Assessment Objection Period
December 2017	Issuance of Decision Notice



Apache Leap Special Management Area

-  Existing Access Locations
-  Highway
-  U.S. Forest Service Road
-  Other Road
-  Apache Leap Special Management Area
-  Apache Leap South End Land Exchange Parcel
-  Tonto National Forest

