



Apache Leap Special Management Area

Special Management Areas

What is a special management area (SMA) ?

Applied to Federal public lands, a special management area is “An area or feature identified and managed to maintain its unique special character or purpose.” (36 CFR 219.19)

Special areas can be designated administratively (executive branch) or by statute (Congress).

Examples of areas designated by Congress include: Wilderness, Wild & Scenic Rivers, National Natural Landmarks, National Historic or Scenic Trails, and National Recreation Areas.

Examples of administratively designated areas include: Research Natural Areas, Experimental Forests, Important Birding Areas, and areas having unique botanical or geologic features.

What is the Apache Leap SMA?

An area designated by Congress in December 2014, as part of the Carl Levin and Howard P. “Buck” McKeon National Defense Authorization Act (NDAA) for Fiscal Year 2015.

Section 3003 of the NDAA outlines the primary purposes, authorized activities and additional considerations for the management of this special area located southeast of Superior, Arizona.

Section 3003 includes the exchange of the 110-acre Apache Leap Parcel, presently owned by Resolution Copper, to the Tonto National Forest (TNF). This parcel will be added to an existing 697-acre area of the TNF to form the 807-acre Apache Leap SMA (see map).

“The purposes of this special management area are:

-to preserve the natural character of Apache Leap;

-to allow for traditional use by Native American people; and

-to protect and conserve cultural and archeological resources of the area.”

- NDAA, Section 3003 (g)2



Looking south from the top of Apache Leap

In This Issue

Special Management Areas

Your Input Counts!

What’s in a Mgmt. Plan?

Mgmt. Plan Q&A

Our Next Steps:
Project Schedule



A view of Picketpost Mountain from the top of Apache Leap

Tonto National Forest seeks your input to prepare the management plan for Apache Leap

The NDAA directs the Forest Service to prepare a management plan for the Apache Leap area by December 19, 2017 - in consultation with affected tribes, the Town of Superior in Pinal County, Arizona, Resolution Copper and interested members of the public.

The Apache Leap area will be managed in accordance with the NDAA and Forest Service regulations governing special area designations.

During plan preparation the Forest Service must consider whether additional measures are necessary to protect the cultural, archeological, or historical resources of Apache Leap, and consider whether to provide access for recreation.

Between now and the end of November, we seek input about what is special about the Apache Leap area and how it should be managed for present and future generations.

Will Apache Leap be managed differently in the future?

Current management direction for the Apache Leap area is found in the 1985 Tonto Forest Plan (as amended). The area has multiple uses including: dispersed recreation, livestock grazing, hunting, protection of water quality, and conservation of wild-life habitat.

Future management of the Apache Leap area will focus primarily on the three purposes identified in Section 3003 of the NDAA (see first page) - along with other considerations that result from Tribal consultations and the management plan development process.

What activities and land uses will be allowed or restricted?

Section 3003 of the NDAA authorizes several activities to occur within the newly designated Apache Leap SMA:

- Installation of seismic monitoring equipment to protect Apache Leap resources

- Installation of fences, signs, or other measures to protect the health and safety of the public

- Operation of an underground tunnel and associated workings, as described in Resolution Copper's General Plan of Operations, subject to reasonable terms and conditions

Other uses and activities, identified during consultation and plan development, will be evaluated as part of the environmental assessment process (see schedule - last page).

How is Apache Leap project related to others on the Forest?

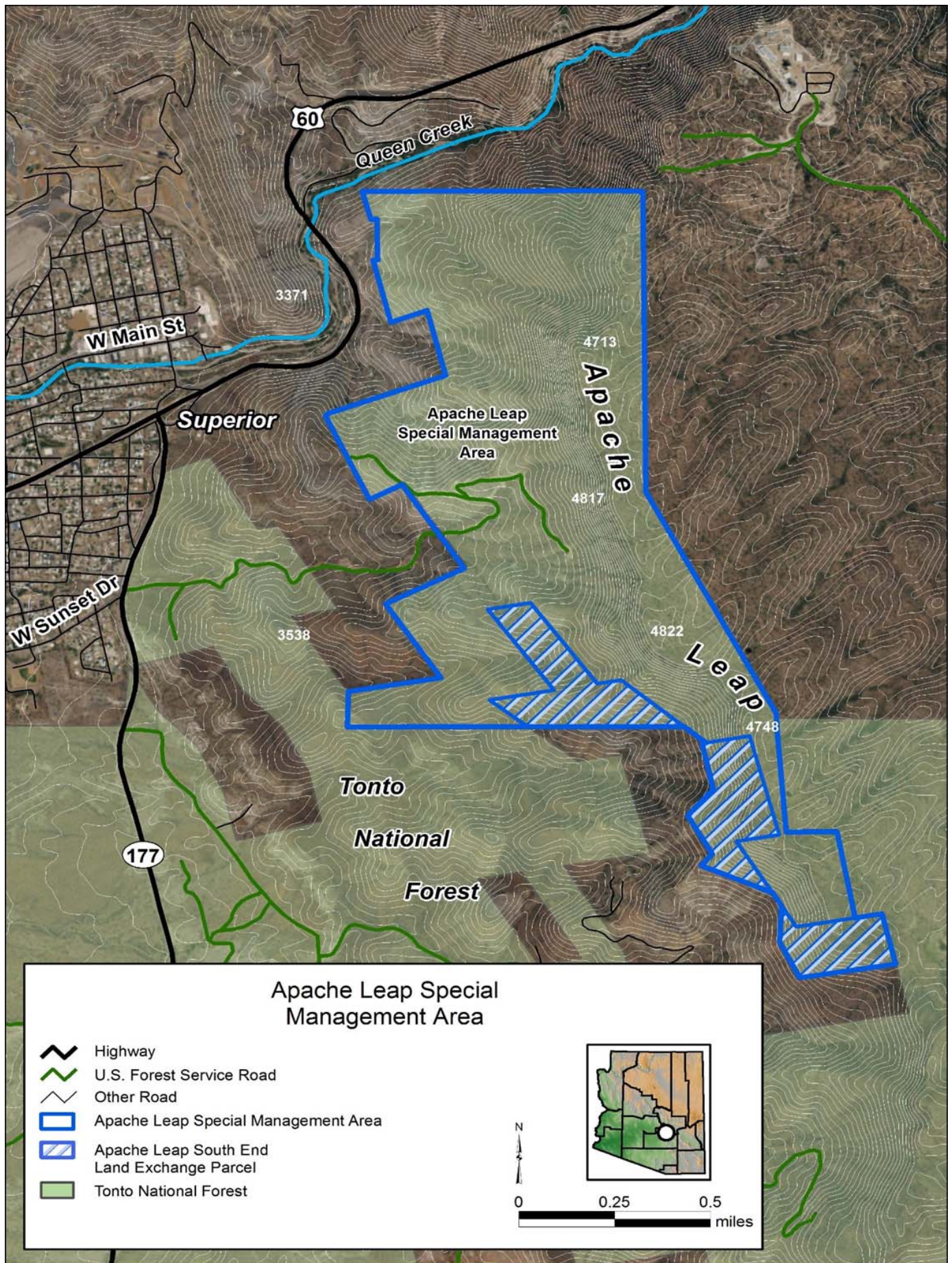
The Apache Leap SMA is adjacent to the East Plant Site of the Resolution Copper proposed General Plan of Operations.

Preparing a management plan for Apache Leap SMA is a federal action prompted by Section 3003 of the NDAA—which also authorizes the exchange of land between Resolution Copper and the United States.

The decision to approve the Apache Leap management plan will include language to amend the 1985 Tonto Forest plan.

What's in a management plan? Here are 5 essential parts:

Plan Part	Purpose
Desired Conditions	Describe how the plan area should look in the future
Objectives	What is to be achieved in the near term as progress towards Desired Conditions (site-specific actions)
Standards/ Guidelines	Constraints on project and activity decision-making to help achieve desired conditions, avoid or mitigate undesirable effects, or to meet applicable legal requirements
Land Suitability	Areas identified as suitable/not suitable for certain uses or activities based on desired conditions
Map	Identification of area boundaries



Our Next Steps:

Apache Leap SMA Planning Steps and Schedule

Sept – Dec 2016	Consult with affected Indian tribes, the Town of Superior, interested members of the public, and Resolution Copper for input on plan development
Jan – March 2017	Prepare Management Plan
March – April 2017	Collect Public Comments on Management Plan Hold Public Meeting in Superior, AZ
March – June 2017	Prepare Environmental Assessment
July – Nov 2017	Hear and Resolve Objections
December 2017	Issue Decision Notice

Contact Us

For more information about the Apache Leap Special Management Area:

Tonto National Forest Supervisor's Office

2324 E. McDowell Road
Phoenix, AZ 85006

(602) 225 5200

www.fs.usda.gov/tonto/

Visit us on the web at
www.ApacheLeapSMA.us



United States Department of Agriculture
Tonto National Forest

Apache Leap Special Management Area



Tonto National Forest

Project Manager - Apache Leap SMA
2324 E. McDowell Road
Phoenix, AZ 85006-0000

PLACE
STAMP
HERE